

D.M. Lighting

#6530 STANDARD WET LOCATION



A choice of several finishes and energy efficient fluorescent, incandescent or metal halide lamping come together in a very unique wet location package. A matching pendant is also available for dry or damp locations to complete your specifications.

W14

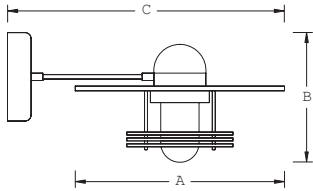


#6530

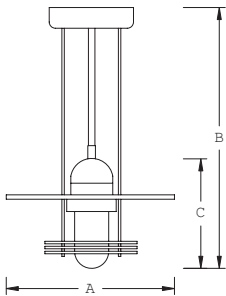


#6540

Matching pendant available (see p23)



CATALOG#	LAMPING	DIMENSIONS			NOTES
		A	B	C	
					STANDARD WET LOCATION
6530	1 13W PLC	17 3/4"	10"	26"	
6531	1 26W PLT	17 3/4"	10"	26"	
6532	1 32W PLT	17 3/4"	10"	26"	
6533	1 100W A-19	17 3/4"	10"	26"	
6534	1 70W ED-17MH	17 3/4"	10"	26" (H.I.D. ballast is remote)	



CATALOG#	LAMPING	DIMENSIONS			NOTES
		A	B	C	
					PENDANT AVAILABLE IN DRY OR DAMP LOCATION ONLY
6540	1 13W PLC	17 3/4"	22"	10"	
6541	1 26W PLT	17 3/4"	22"	10"	
6542	1 32W PLT	17 3/4"	22"	10"	
6543	1 100W A-19	17 3/4"	22"	10"	
6544	1 70W ED-17MH	17 3/4"	22"	10" (H.I.D. ballast is remote)	

ORDERING INFORMATION

CATALOG NUMBER + FINISH + OPTIONS OR MODIFICATIONS

AVAILABLE ADDERS

D.M. Lighting

a division of d.m.hannegan, inc

3192 Factory Drive, Pomona, CA 91768
 Phone: (909) 595-7075
 Fax: (909) 595-0670



STANDARD SPECIFICATIONS	
Material	Fabricated From A 260 Brass
Diffuser	(CG) Clear Glass
Ballast	(ELB) Electronic or (MAG) Magnetic
Voltage	(120V) or (277V)
Finish	(*) Standard Paint
WET LOCATION	
	ETL listed

FINISHES	
PB	Polished Brass
PC	Polished Chrome
PU	Polished Copper
VP	Verdigris Patina
WB	Weathered Brass
SB	Satin Brass
SC	Satin Chrome
BBZ	Brushed Bronze Paint
CC	Custom Color

ORDERING OPTIONS	
(CPG)	Clear Prismatic Glass