

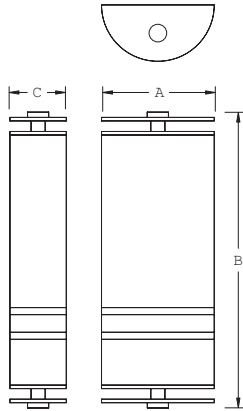
D.M. Lighting

#3710 STANDARD WET LOCATION



This wet location wall sconce combines it's good looks with A.D.A. compliance. Shown here in Satin Aluminum for a modern finish.

W33



CATALOG#	LAMPING	DIMENSIONS		
		A	B	C
3710	ADA 2 13W PL	8"	21"	4"
3711	ADA 2 26W PLC	8"	21"	4"
3712	ADA 2 60W T-10	8"	21"	4"



ORDERING INFORMATION
CATALOG NUMBER + FINISH + OPTIONS OR MODIFICATIONS

AVAILABLE ADDERS

D.M. Lighting
 a division of d.m.hannegan, inc

3192 Factory Drive, Pomona, CA 91768
 Phone: (909) 595-7075
 Fax: (909) 595-0670

STANDARD SPECIFICATIONS	
Material	Fabricated From Aluminum
Diffuser	(WA) White Acrylic
Ballast	(ELB) Electronic or (MAG) Magnetic
Voltage	(120V) or (277V)
Finish	(*) Standard Paint
WET LOCATION	
ETL location	

FINISHES	
SA	Satin Aluminum
BBZ	Brushed Bronze Paint
CC	Custom Color

ORDERING OPTIONS	
(FAA)	Faux Alabaster
	Acrylic Diffuser
(WPC)	White Polycarbonate
	Diffuser
(SBL)	Sandblasted
	Acrylic Diffuser

